

NICOLE LARSON



SUNSET

THIS PROJECT WAS INSPIRED BY PASSION FOR NATURE AND THE TRUE BEAUTY THAT IS HELD WITHIN IT. TO CREATE THIS PROJECT I USED A PRE-EXISTING IMAGE AS A REFERENCE TO LAYOUT THE MOUNTAIN RANGES IN THE DISTANCE AS WELL AS THE MOUNTAIN RANGE IN THE FOREGROUND THAT CONTAINS TREETOPS.

NICOLE LARSON



KITTEN GLARE

THE PRIMARY INSPIRATION FOR THIS PIECE WAS THE DISTINCT AND MESMORIZED STARE THAT KITTENS GIVE OFF WHEN SOMETHING IN THE DISTANCE CATCHES THEIR EYE. CREATING THIS PIECE AND GIVING IT AN ABSTRACT LOOK PRODUCED A MORE DEFINED LOOK.

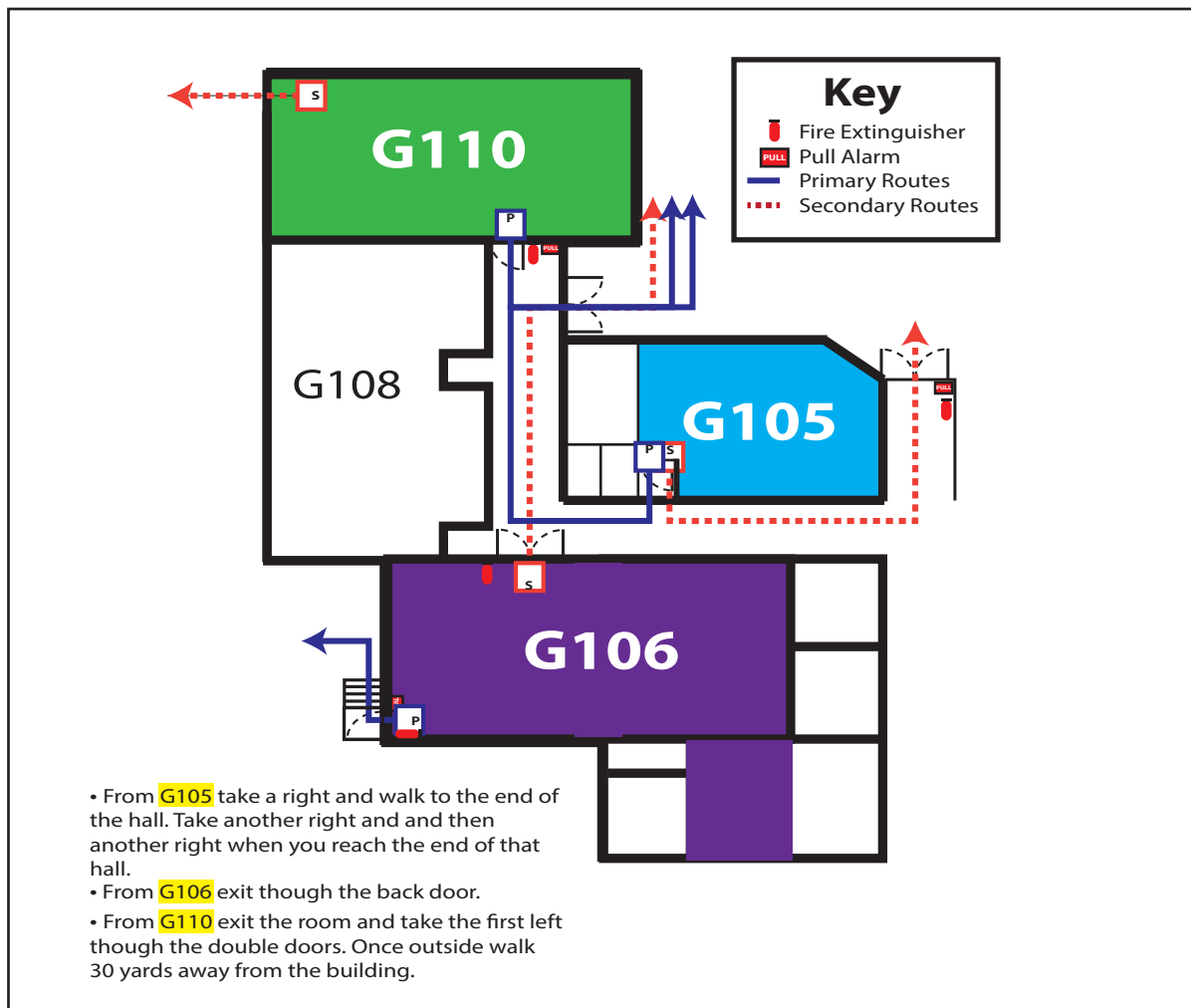
NICOLE LARSON



THE WIZARD OF OZ POSTER

THIS PROJECT WAS PROVISIONED BY THE HIGH SCHOOL THEATRE DEPARTMENT FOR THEIR UPCOMING THEATRICAL PERFORMANCE OF "THE WIZARD OF OZ". A KEY ELEMENT OF THIS PROJECT WAS THE COLLABORATION WITH THE DRAMA DEPARTMENT THROUGH THE DESIGN PROCESS AS WELL AS THE REVISION PROCESS TO PRODUCE THE FINAL PRODUCT THAT WAS TO BE PRINTED.

NICOLE LARSON



FIRE / EMERGENCY PLAN

THE MAIN PURPOSE OF THIS PROJECT IS TO ILLUSTRATE THE APPROPRIATE AND SAFEST WAY TO EXIT THE BUILDING IN THE CASE OF AN EMERGENCY. DURING THE DEVELOPMENT AND CREATION OF THIS EMERGENCY EXIT PLAN I HAD TO LOCATE AND MAP OUT THE LOCATION OF ALL IMPORTANT ITEMS AS WELL AS DETERMINE THE BEST ROUTE TO USE FOR QUICK AND SIMPLE EVACUATION.

NICOLE LARSON



FOCUS ON MIDDLE SCHOOLS

THE MAIN INFLUENCE ASSIGNED FOR THIS PROJECT WAS TO FOCUS ON THE OUTLINE OF THE COURSE OPTIONS FOR THE STUDENTS TRANSITIONING INTO MIDDLE SCHOOL FROM ELEMENTARY SCHOOL. THE ASSIGNMENT WAS TO CREATE A COVER PAGE FOR THE BROCHURE TO GET THOSE STUDENTS EXCITED ABOUT STARTING MIDDLE SCHOOL.

NICOLE LARSON



FACULTY PARKING PASS

THE PURPOSE FOR THIS PIECE WAS TO CREATE A NEW PARKING PASS FOR THE FACULTY MEMBERS FOR THE 2016-2017 YEAR. THE DESIGN FOR THIS SPECIFIC PARKING PASS WAS TO MAKE THE YELLOW JACKET LOOK TRANSPARENT. WHILE ALSO GIVING THE PASS AN OUTSTANDING DESIGN THAT THE FACULTY WOULD ENJOY.

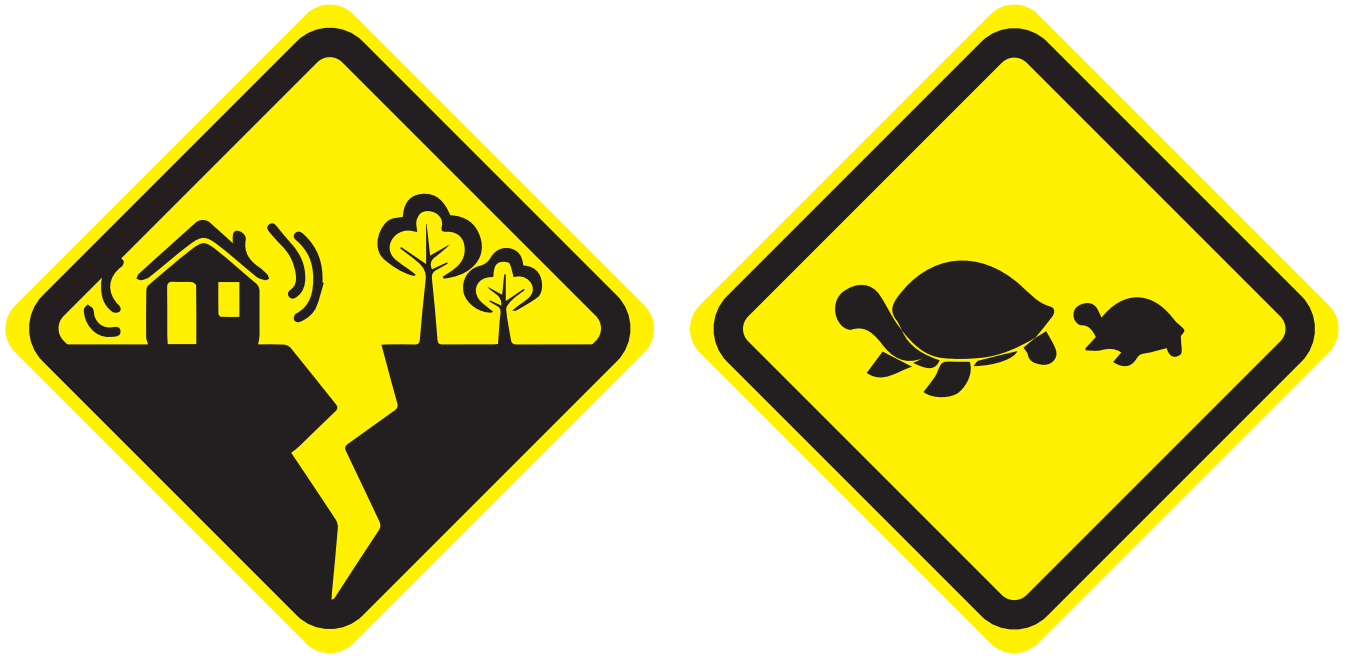
NICOLE LARSON



BEAR VECTORIZATION

FOR THIS SPECIFIC DESIGN I TOOK A RASTER IMAGE THAT WAS LOW RESOLUTION AND REPRODUCED THE IMAGE USING VECTOR PATHS. I USED THE PEN TOOL ALONG WITH THE PATHFINDER TOOL TO TWEAK AND CREATE ALL OF THE SHAPES USED TO CREATE THE FINAL PRODUCT. TO FINISH OFF THE IMAGE I MODIFIED THE COLORS FROM THE ORIGINAL SHADES OF BROWN TO SHADES OF PURPLE.

NICOLE LARSON



CUSTOM ROAD SIGNS

FOR THESE CUSTOM ROAD SIGNS THE ASSIGNMENT WAS TO TAKE AN EXSITING OUTLINE OF A ROAD SIGN AND CREATE A FEW DIFFERENT DESIGNS. THE FIRST ROAD SIGN IS TO SYMBOLIZE AN EARTHQUAKE AND THE SECOND IS SHOWING TURTLE CROSSING. EACH DESIGN WAS CREATED WITH CREATIVITY THAT YOU NORMALLY DON'T SEE ON JUST ANY ORDINARY ROAD SIGN.

NICOLE LARSON



MULTI-EXPOSURE

THIS PROJECT WAS INSPIRED BY THE BEAUTY IN NATURE AND THE PHOTOGENIC ENERGY BY THE MODEL. WORKING WITH PHOTOSHOP ALIGNING THE PHOTOS AND MODIFYING THEM TO COMBINE THEM INTO ONE PHOTO. THIS WAS ACHIEVED BY TAKING MULTIPLE PHOTOS OF THE SUBJECT IN DIFFERENT POSITIONS WHILE USING THE SAME SURROUNDINGS.



A Tropical Storm Along with Heavy Rain for the Carolinas

We didn't have to wait long for the first named storm of the tropical season.

(Photo: NASA GOES Project)



Tropical Storm Andrea formed Wednesday afternoon in the Gulf of Mexico, with the center of the storm about 300 miles west of Tampa.

Before all is said and done, Andrea likely will have an impact though probably indirect on the Charlotte region. The storm's effects on our area is expected to be in the form of drenching thunderstorms, possibly enough to cause flash flooding.

The National Hurricane Center's likely track for Andrea carries the center of the storm northward along the coastal plain of the Carolinas, about 50 miles inland.

That path is close enough to bring heavy rain to the eastern edge of the Charlotte region -- say, Richmond and Anson counties in North Carolina, and Chesterfield County in South Carolina.

But don't be fooled. As the system races northward Thursday and Friday and changes from tropical to extratropical, its rain shield will expand. Showers and thunderstorms likely will surge northward (as they're doing tonight) across the Carolinas Piedmont.

In short, look for a very wet period from Thursday through Friday afternoon or evening, until Andrea pushes northeast of the region.

We'll likely see some flash flood warnings issued on a local basis.

As of now, the National Weather Service office locally doesn't expect to issue any widespread flood watches, but if Andrea should track a bit farther inland, all that could change.

In short, the next 24 to 48 hours will bear watching. Andrea won't be a big wind-producer, but it's likely to cause some flooding problems.



Steve Lyttle says growing up in northeastern Ohio, with its foot-deep snows and summertime severe thunderstorms, fueled his interest in meteorology.

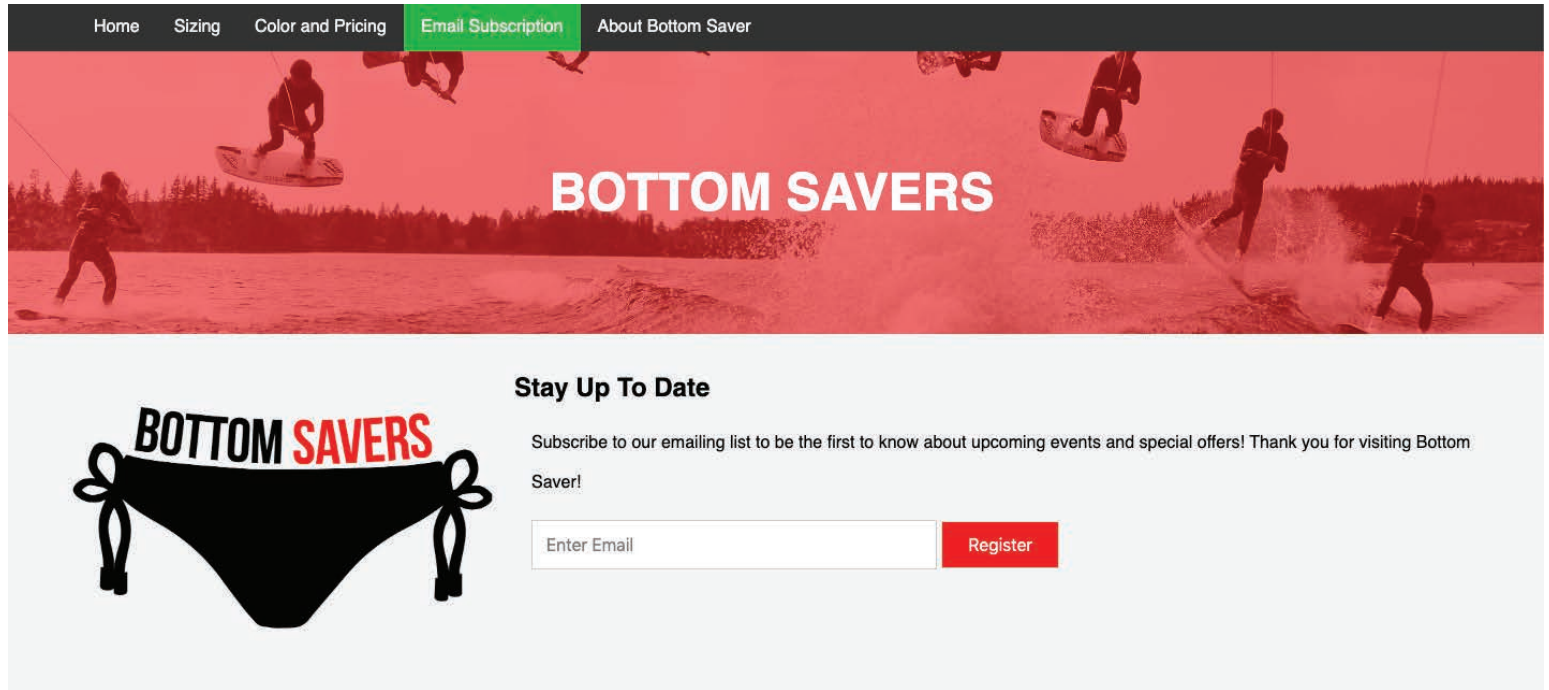
Written by Steve Lyttle



FORMAL LAYOUT

THIS PROJECT WAS INSPIRED BY HURRICANE DORIAN, HOWEVER, IT IS NOT ABOUT HURRICANE DORIAN, BUT ABOUT TROPICAL STORMS IN THE CAROLINAS. THIS PROJECT WAS CREATED TO ADMIRE THE ONLINE HEADLINES ABOUT THE IMPORTANCE OF EVENTS GOING ON IN THIS WORLD.

NICOLE LARSON



BOTTOM SAVER WEBSITE

THIS WEBSITE DESIGN WAS INSPIRED BY A PERSONAL BOATING EXPERIENCE WHERE WE LOST OUR BOTTOMS. I CAME UP WITH THE IDEA OF BOTTOM SAVERS TO SIMPLY SAVE YOU FROM COMPLETE EMBARRASSMENT OF LOSING YOUR BOTTOMS IN THE WATER. BOTTOM SAVER IS SIMPLY A TEETHER WITH CLIPS THAT ARE ATTACHED TO YOUR LIFEJACKET THAT SNAP ONTO YOUR BOTTOMS.